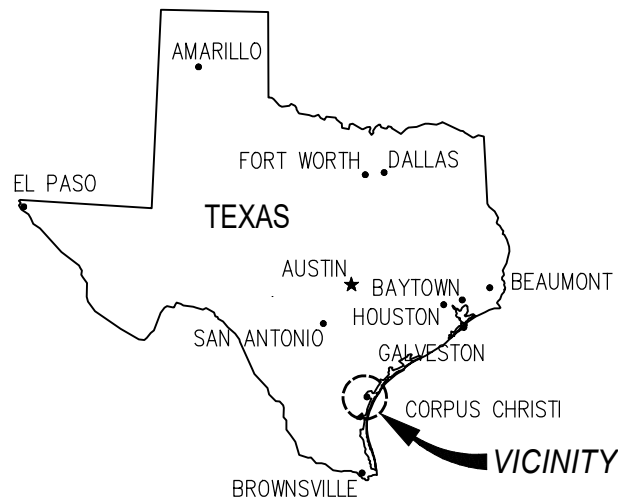


VICINITY MAP

SCALE: NTS



AREA MAP

SCALE: NTS

NOTES:

ADJACENT TO: CORPUS CHRISTI SHIP CHANNEL, INNER HARBOR
VERTICAL DATUM: MLLW
HORIZONTAL DATUM: TXSPS NAD83 (NSRS2011)
ADJACENT PROPERTY OWNERS: PORT OF CORPUS CHRISTI,
VALERO LOGISTICS AND KOCH PIPELINE CO.

LAT: N27° 48' 53.15"
LONG: W97° 24' 04.96"

CHRIS O'BRIEN, P.E.
TX PE 108174

PRELIMINARY - FOR PERMIT PURPOSES ONLY

REV
1

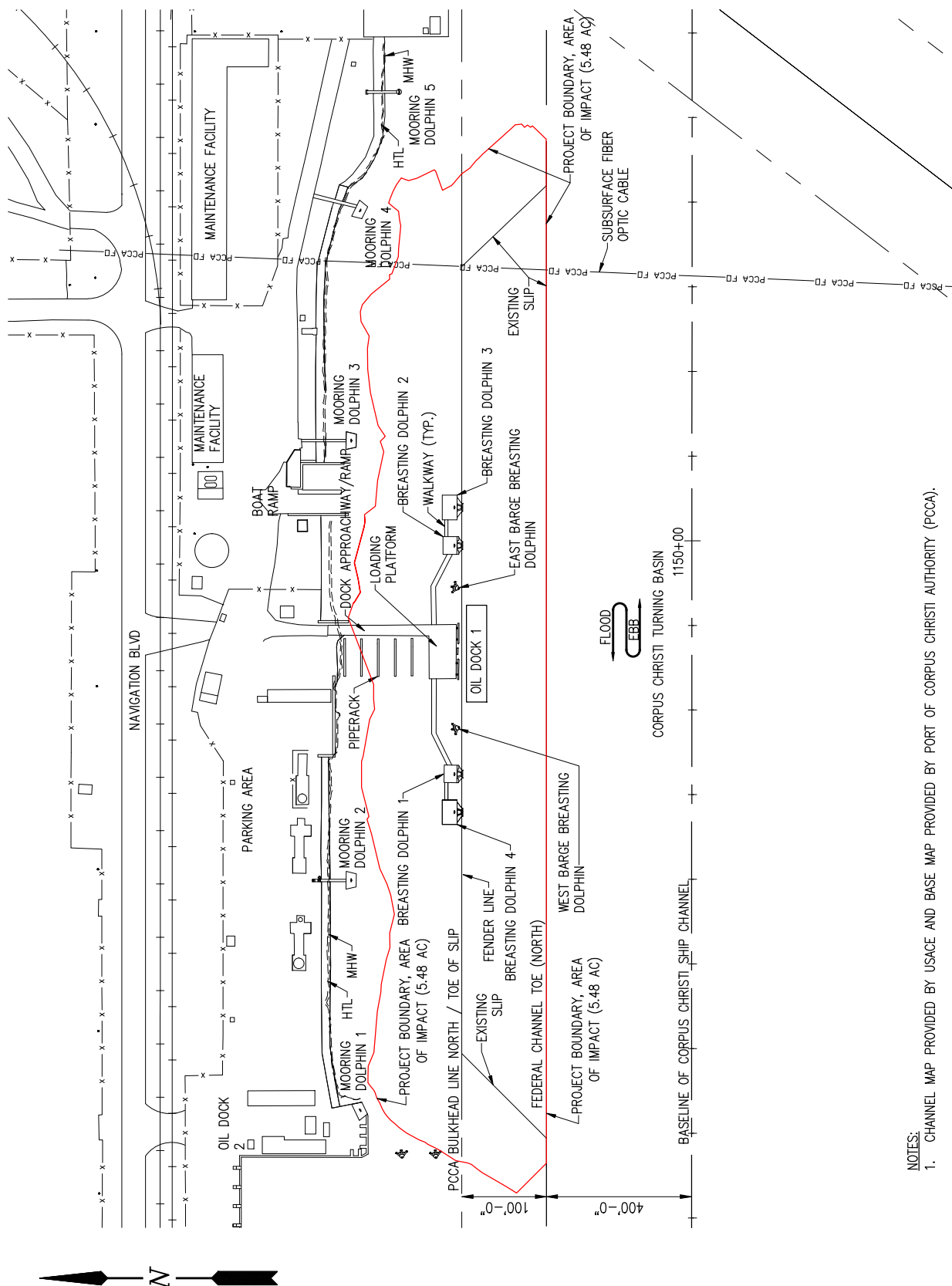
LANIER & ASSOCIATES
CONSULTING ENGINEERS
INCORPORATED

LA: EF-1120 TX: F-2981
NEW ORLEANS • BEAUMONT • CORPUS CHRISTI • HOUSTON

PORT OF CORPUS CHRISTI AUTHORITY
CORPUS CHRISTI NUECES COUNTY, TEXAS

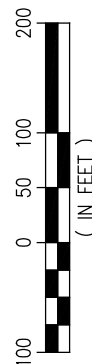
OIL DOCK 1
SHIP DOCK IMPROVEMENTS
COVER SHEET, VICINITY MAP & SHEET INDEX

DATE 9/10/2021
DESIGN CLO
DRAWN WPA
CHECK CLO
JOB NO 11572
SHEET No.
1 OF 14



NOTES:
1. CHANNEL MAP PROVIDED BY USACE AND BASE MAP PROVIDED BY PORT OF CORPUS CHRISTI AUTHORITY (PCCA).

EXISTING SITE PLAN



CHRIS O'BRIEN, P.E.
TX PE 108174

PRELIMINARY - FOR PERMIT PURPOSES ONLY

REV
1

LANIER & ASSOCIATES
CONSULTING ENGINEERS
INCORPORATED

LA: EF-1120 TX: F-2981
NEW ORLEANS • BEAUMONT • CORPUS CHRISTI • HOUSTON

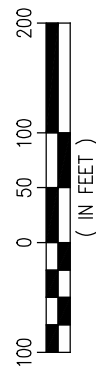
PORT OF CORPUS CHRISTI AUTHORITY
CORPUS CHRISTI NUECES COUNTY, TEXAS

OIL DOCK 1
SHIP DOCK IMPROVEMENTS
EXISTING SITE PLAN

DATE 9/10/2021
DESIGN CLO
DRAWN WPA
CHECK CLO
JOB NO 11572
SHEET No.
2 OF 14



DEMOLITION PLAN



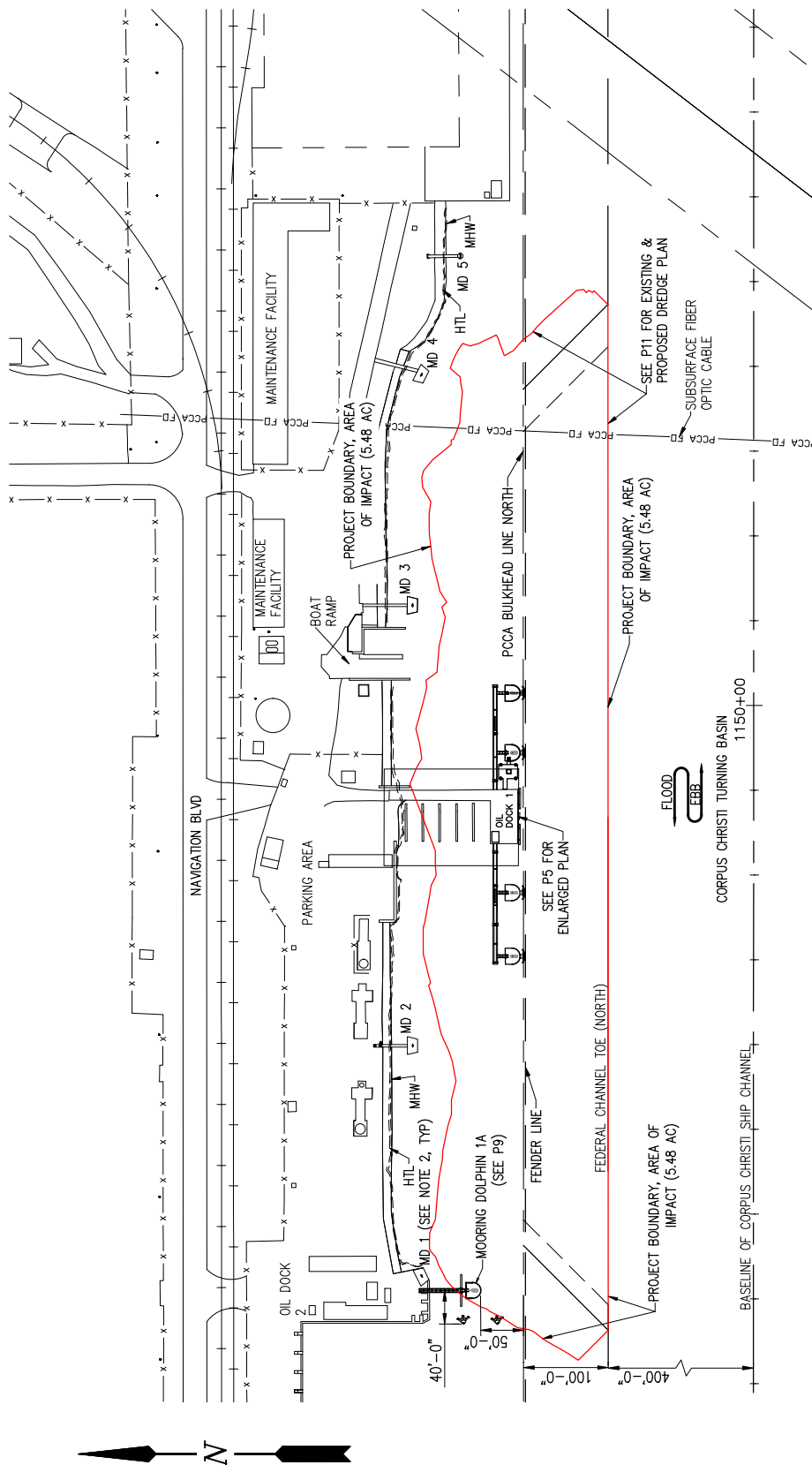
LANIER & ASSOCIATES
CONSULTING ENGINEERS

LA: EF-1120 TX: F-2981
NEW ORLEANS • BEAUMONT • CORPUS CHRISTI • HOUSTON

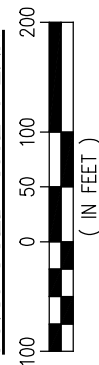
PORT OF CORPUS CHRISTI AUTHORITY
CORPUS CHRISTI NUECES COUNTY, TEXAS

OIL DOCK 1 SHIP DOCK IMPROVEMENTS DEMOLITION PLAN

DATE 9/10/2021
 DESIGN CLO
 DRAWN WPA
 CHECK CLO
 JOB NO 11572
 SHEET No.
3 OF **14**



PROPOSED SITE PLAN



IMPACT SUMMARY TABLE			
PROPOSED FEATURE	IMPACT TYPE	HABITAT TYPE	MAXIMUM AREA (SF)
DREDGE TEMPLATE	PERMANENT	UNVEGETATED / SUBMERGED	239,060
MONOPILE STRUCTURES	PERMANENT	UNVEGETATED / SUBMERGED / AERIAL	166
STEEL SHEETPILE WALL	PERMANENT	UNVEGETATED / SUBMERGED	297
GANGWAY PLATFORM	PERMANENT	UNVEGETATED / SUBMERGED / AERIAL	432
STEEL DOCK PILES	PERMANENT	UNVEGETATED / SUBMERGED / AERIAL	30
STEEL WALKWAY PILES	PERMANENT	UNVEGETATED / SUBMERGED / AERIAL	32

- NOTES:
- CHANNEL MAP PROVIDED BY USAGE AND BASE MAP PROVIDED BY PORT OF CORPUS CHRISTI AUTHORITY (PCCA)
 - ALL MOORING STRUCTURES, MD1 THRU MD5, WILL HAVE BOLLARDS REMOVED AND REPLACED WITH TWIN, MANUAL HOOKS
 - SCOPE OF WORK INCLUDES DEMOLISH BREASTING STRUCTURES AND WALKWAYS, CONSTRUCT NEW MONOPILE BREASTING STRUCTURES AND WALKWAYS, CONSTRUCT ONE NEW MOORING STRUCTURE, REPLACE EXISTING BOLLARDS WITH HOOKS, INSTALL ADDITIONAL DOCK PILES AND STEEL SHEET PILE TOE WALL AND DREDGING.
 - HIGH TIDE LINE = (+)1:19'
MEAN HIGH WATER = (+)0.59'

CHRIS O'BRIEN, P.E.
TX PE 108174

PRELIMINARY - FOR PERMIT PURPOSES ONLY

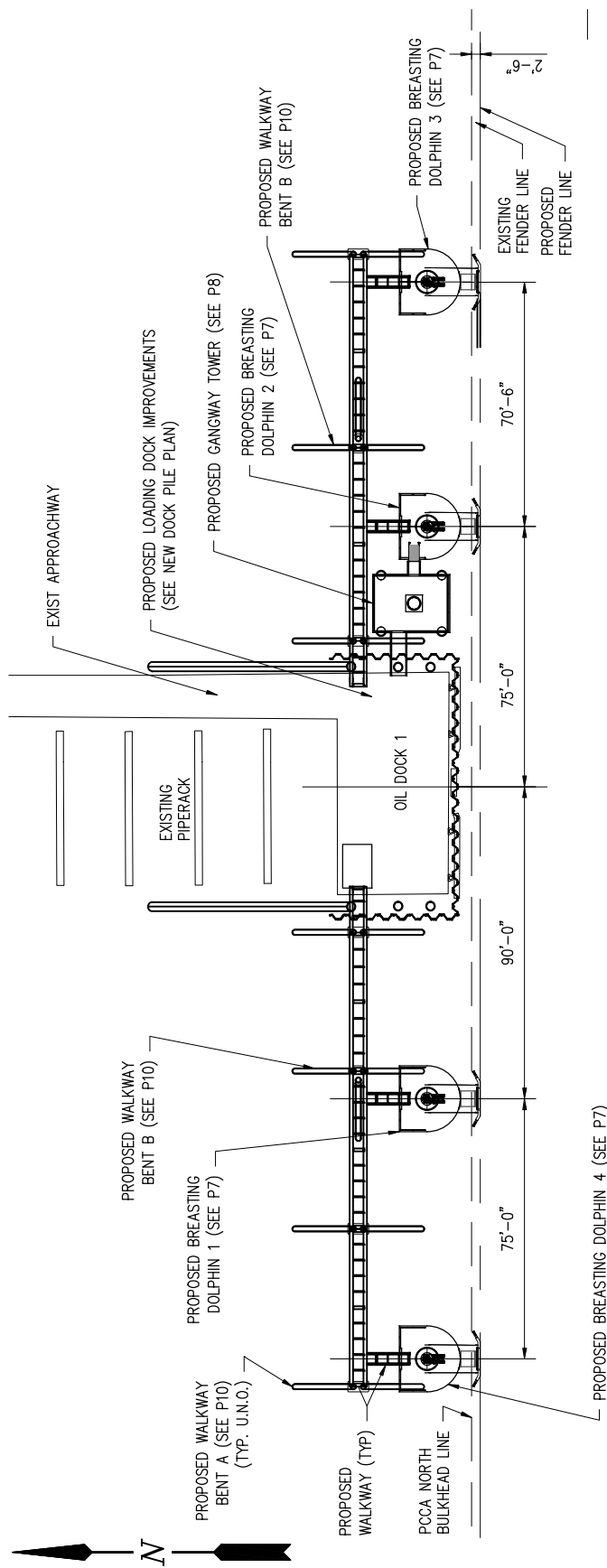
REV
1

LANIER & ASSOCIATES
CONSULTING ENGINEERS
INCORPORATED
LA: EF-1120 TX: F-2981
NEW ORLEANS • BEAUMONT • CORPUS CHRISTI • HOUSTON

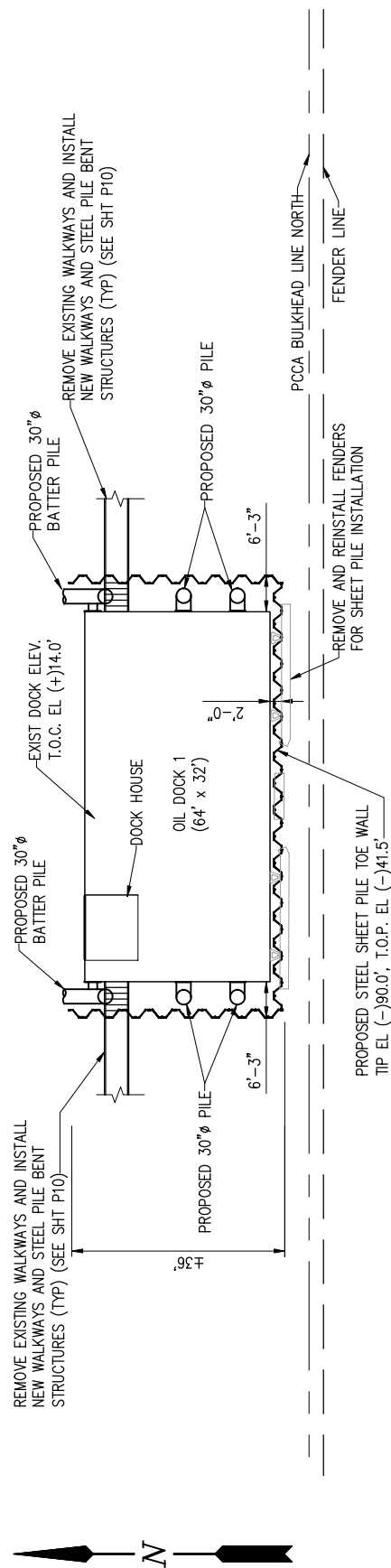
PORT OF CORPUS CHRISTI AUTHORITY
CORPUS CHRISTI NUECES COUNTY, TEXAS

OIL DOCK 1
SHIP DOCK IMPROVEMENTS
PROPOSED SITE PLAN

DATE 9/10/2021
DESIGN CLO
DRAWN WPA
CHECK CLO
JOB NO 11572
SHEET No.
4 OF 14



ENLARGED DOCK PLAN



NEW DOCK PILE PLAN



- NOTES:
1. HIGH TIDE LINE = (+)1.19'
MEAN HIGH WATER = (+)0.29'

CHRIS O'BRIEN, P.E.
TX PE 108174

PRELIMINARY - FOR PERMIT PURPOSES ONLY

REV
1

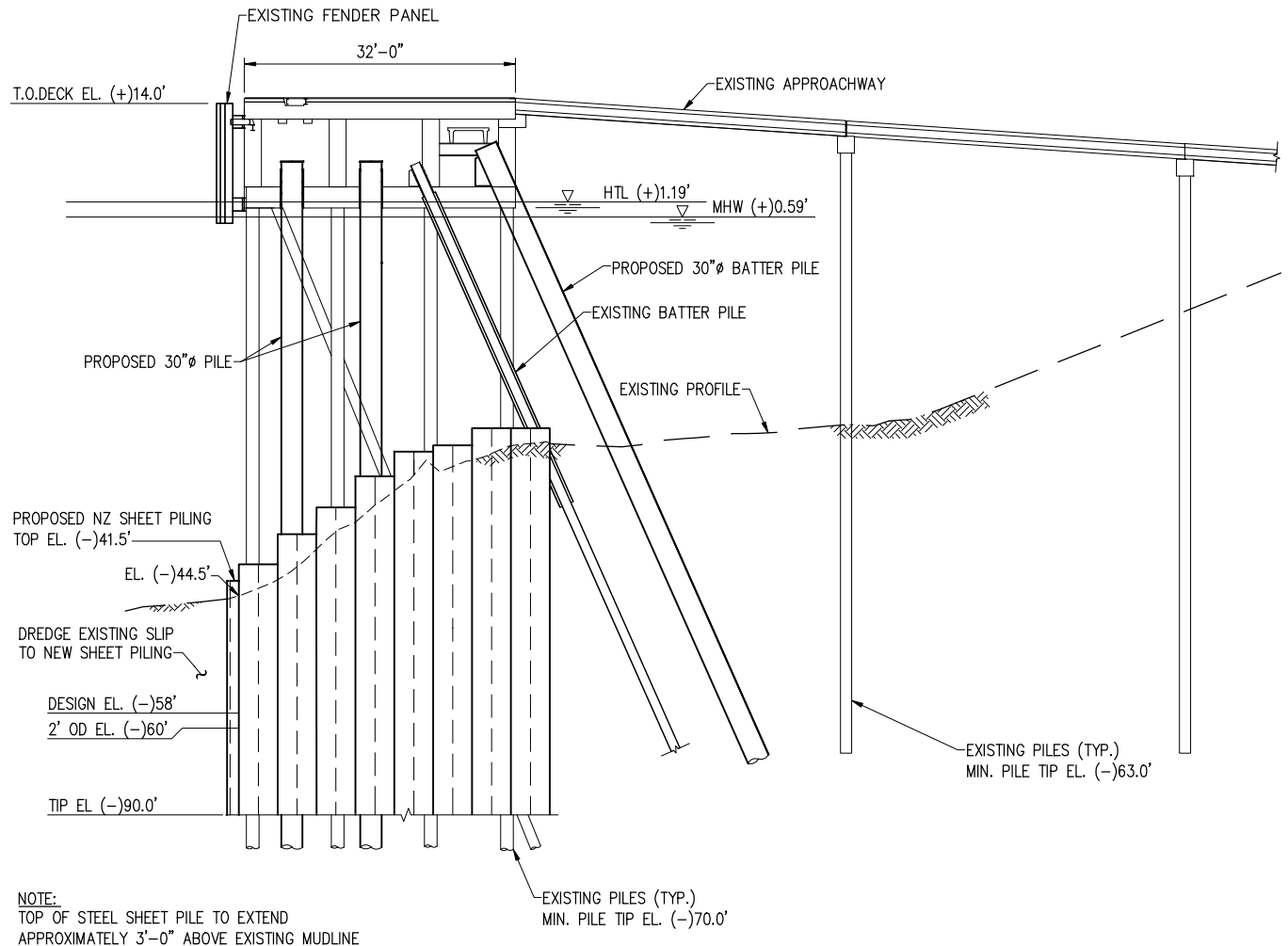
LANIER & ASSOCIATES
CONSULTING ENGINEERS
INCORPORATED

LA: EF-1120 TX: F-2981
NEW ORLEANS • BEAUMONT • CORPUS CHRISTI • HOUSTON

PORT OF CORPUS CHRISTI AUTHORITY
CORPUS CHRISTI NUECES COUNTY, TEXAS

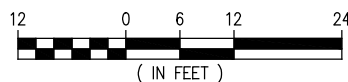
OIL DOCK 1
SHIP DOCK IMPROVEMENTS
ENLARGED DOCK & NEW PILE PLANS

DATE 9/10/2021
DESIGN CLO
DRAWN WPA
CHECK CLO
JOB NO 11572
SHEET No.
5 OF 14



LOADING PLATFORM - EAST ELEVATION

SCALE: 3/64" = 1'-0"



CHRIS O'BRIEN, P.E.
TX PE 108174

PRELIMINARY - FOR PERMIT PURPOSES ONLY

REV
1

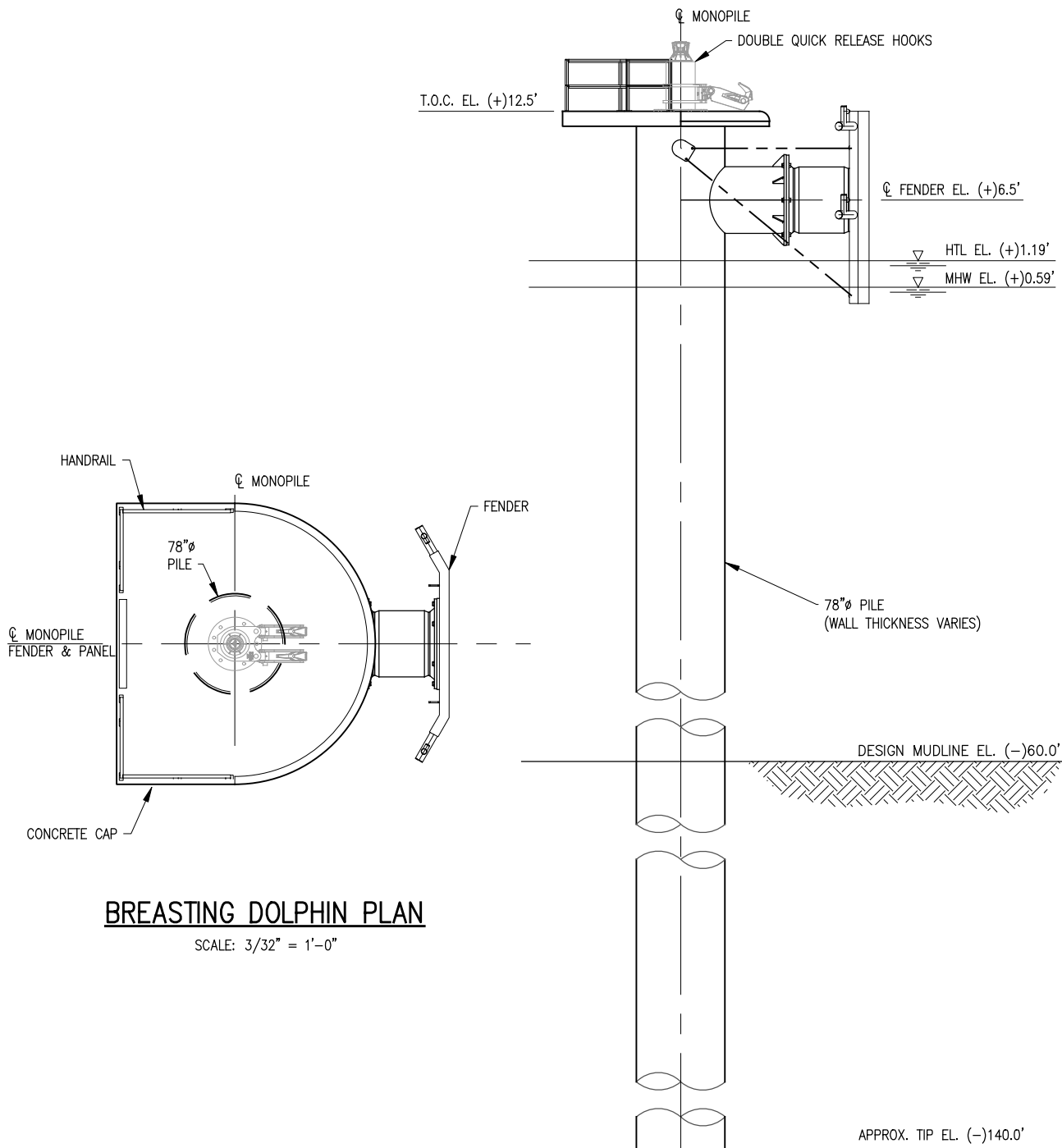
LANIER & ASSOCIATES
CONSULTING ENGINEERS
INCORPORATED

LA: EF-1120 TX: F-2981
NEW ORLEANS • BEAUMONT • CORPUS CHRISTI • HOUSTON

PORT OF CORPUS CHRISTI AUTHORITY
CORPUS CHRISTI NUECES COUNTY, TEXAS

OIL DOCK 1
SHIP DOCK IMPROVEMENTS
LOADING PLATFORM - EAST ELEVATION

DATE 9/10/2021
DESIGN CLO
DRAWN WPA
CHECK CLO
JOB NO 11572
SHEET No.
6 OF 14

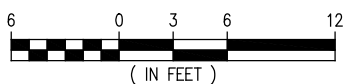


BREASTING DOLPHIN PLAN

SCALE: 3/32" = 1'-0"

BREASTING DOLPHIN ELEVATION

SCALE: 3/32" = 1'-0"



CHRIS O'BRIEN, P.E.
TX PE 108174

PRELIMINARY - FOR PERMIT PURPOSES ONLY

REV
1

LANIER & ASSOCIATES

CONSULTING ENGINEERS
INCORPORATED

LA: EF-1120

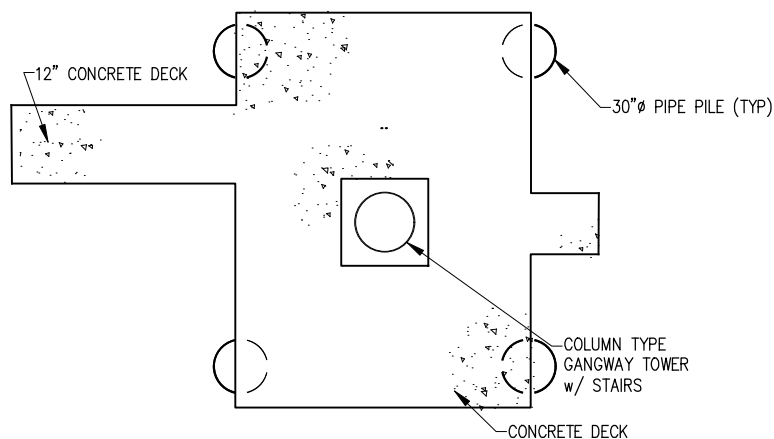
TX: F-2981

NEW ORLEANS • BEAUMONT • CORPUS CHRISTI • HOUSTON

PORT OF CORPUS CHRISTI AUTHORITY
CORPUS CHRISTI NUECES COUNTY, TEXAS

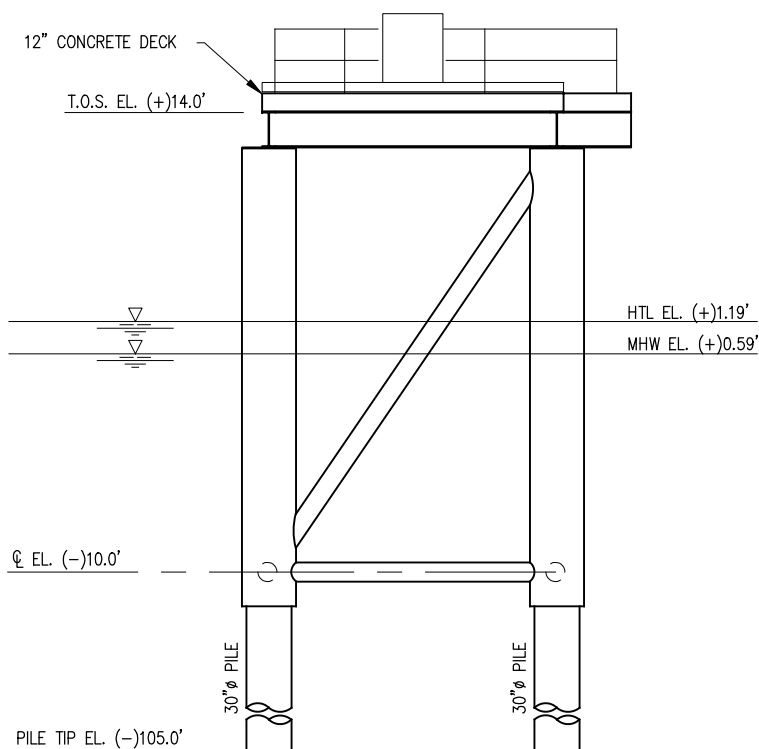
OIL DOCK 1
SHIP DOCK IMPROVEMENTS
BREASTING DOLPHIN PLAN & ELEVATION

DATE 9/10/2021
DESIGN CLO
DRAWN WPA
CHECK CLO
JOB NO 11572
SHEET No.
7 OF 14



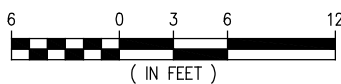
GANGWAY PLATFORM PLAN

SCALE: 3/32" = 1'-0"



GANGWAY PLATFORM ELEVATION

SCALE: 3/32" = 1'-0"



CHRIS O'BRIEN, P.E.
TX PE 108174

PRELIMINARY - FOR PERMIT PURPOSES ONLY

REV
1



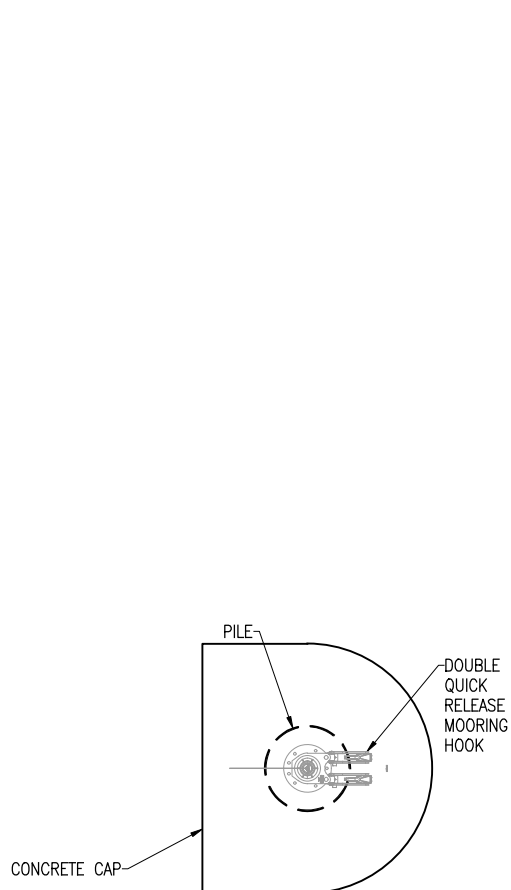
LANIER & ASSOCIATES
CONSULTING ENGINEERS
INCORPORATED

LA: EF-1120 TX: F-2981
NEW ORLEANS • BEAUMONT • CORPUS CHRISTI • HOUSTON

PORT OF CORPUS CHRISTI AUTHORITY
CORPUS CHRISTI NUECES COUNTY, TEXAS

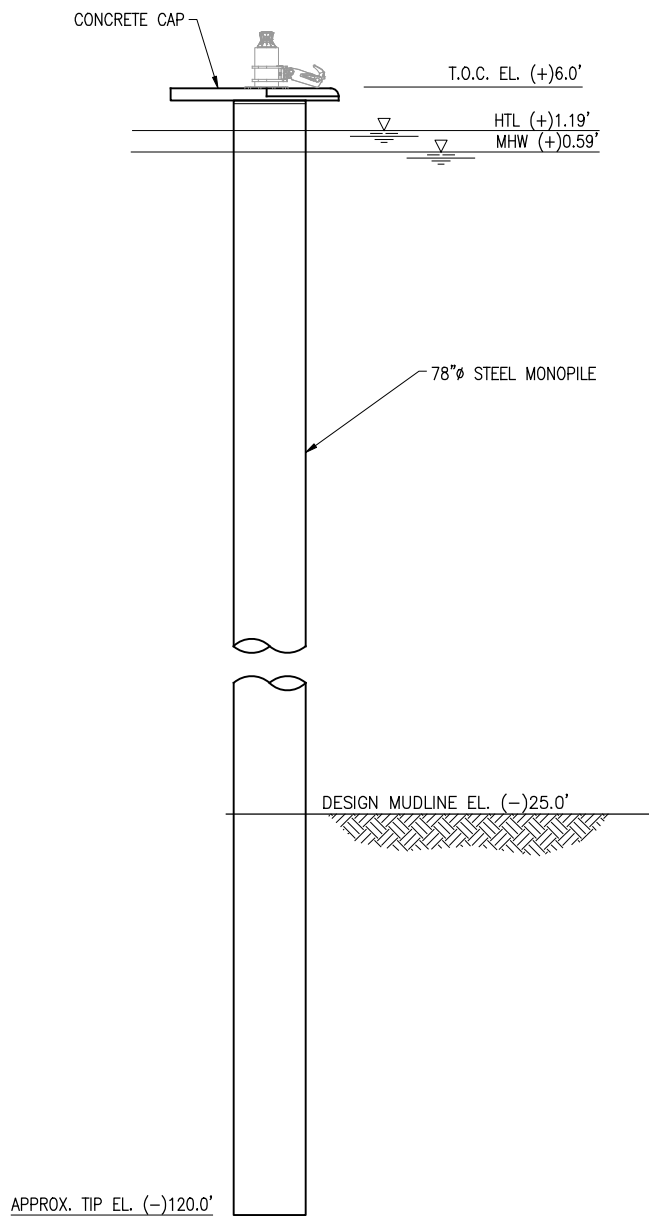
OIL DOCK 1
SHIP DOCK IMPROVEMENTS
GANGWAY PLATFORM AND ELEVATION

DATE 9/10/2021
DESIGN CLO
DRAWN WPA
CHECK CLO
JOB NO 11572
SHEET No.
8 OF 14



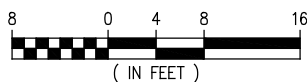
MOORING DOLPHIN PLAN

SCALE: 1/16" = 1'-0"



MOORING DOLPHIN ELEVATION

SCALE: 1/16" = 1'-0"



CHRIS O'BRIEN, P.E.
TX PE 108174

PRELIMINARY - FOR PERMIT PURPOSES ONLY

REV
1



LANIER & ASSOCIATES
CONSULTING ENGINEERS
INCORPORATED

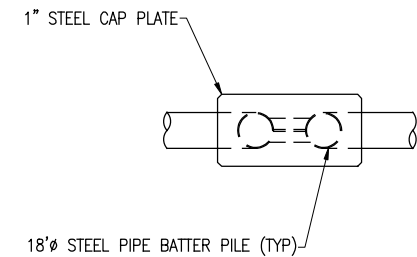
LA: EF-1120 TX: F-2981
NEW ORLEANS • BEAUMONT • CORPUS CHRISTI • HOUSTON

PORT OF CORPUS CHRISTI AUTHORITY
CORPUS CHRISTI NUECES COUNTY, TEXAS

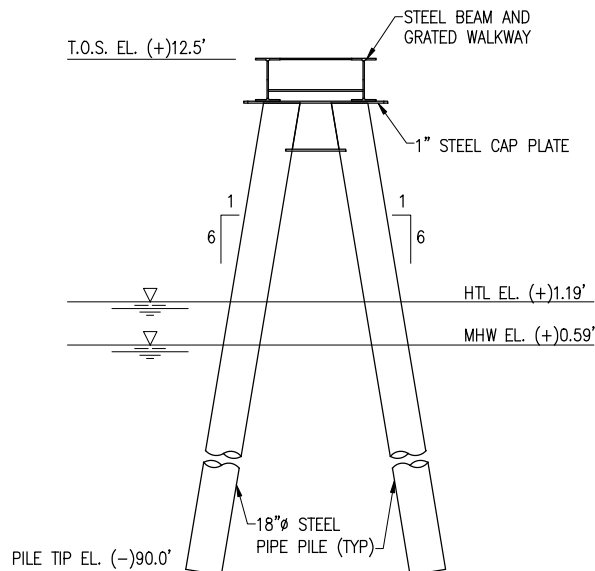
OIL DOCK 1
SHIP DOCK IMPROVEMENTS
MOORING DOLPHIN PLAN & ELEVATION

DATE 9/10/2021
DESIGN CLO
DRAWN WPA
CHECK CLO
JOB NO 11572
SHEET No.
9 OF 14

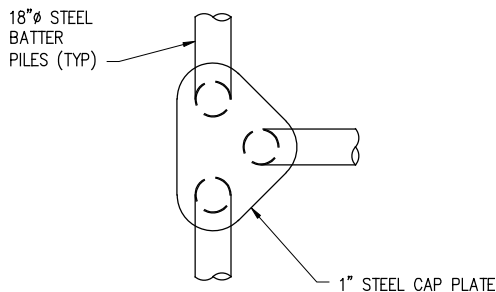
NOTE: HANDRAIL NOT
SHOWN FOR CLARITY.



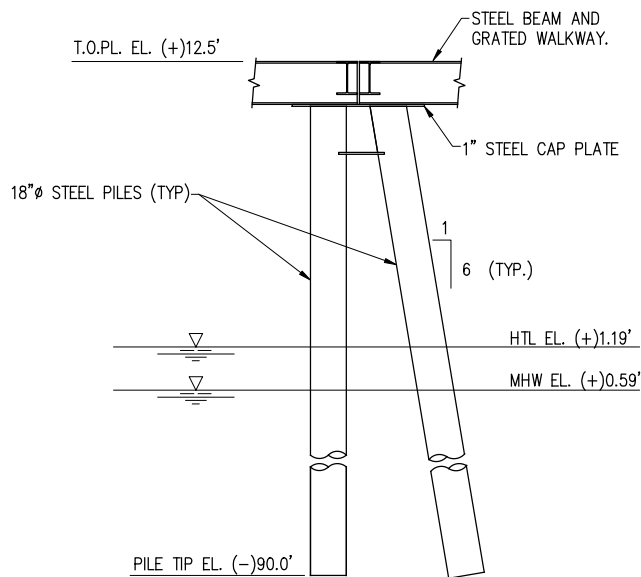
WALKWAY BENT 'A' PLAN
SCALE: 1/8" = 1'-0"



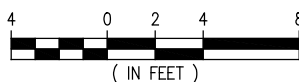
WALKWAY BENT 'A' ELEVATION
SCALE: 1/8" = 1'-0"



WALKWAY BENT 'B' PLAN
SCALE: 1/8" = 1'-0"



WALKWAY BENT 'B' ELEVATION
SCALE: 1/8" = 1'-0"



CHRIS O'BRIEN, P.E.
TX PE 108174

PRELIMINARY - FOR PERMIT PURPOSES ONLY

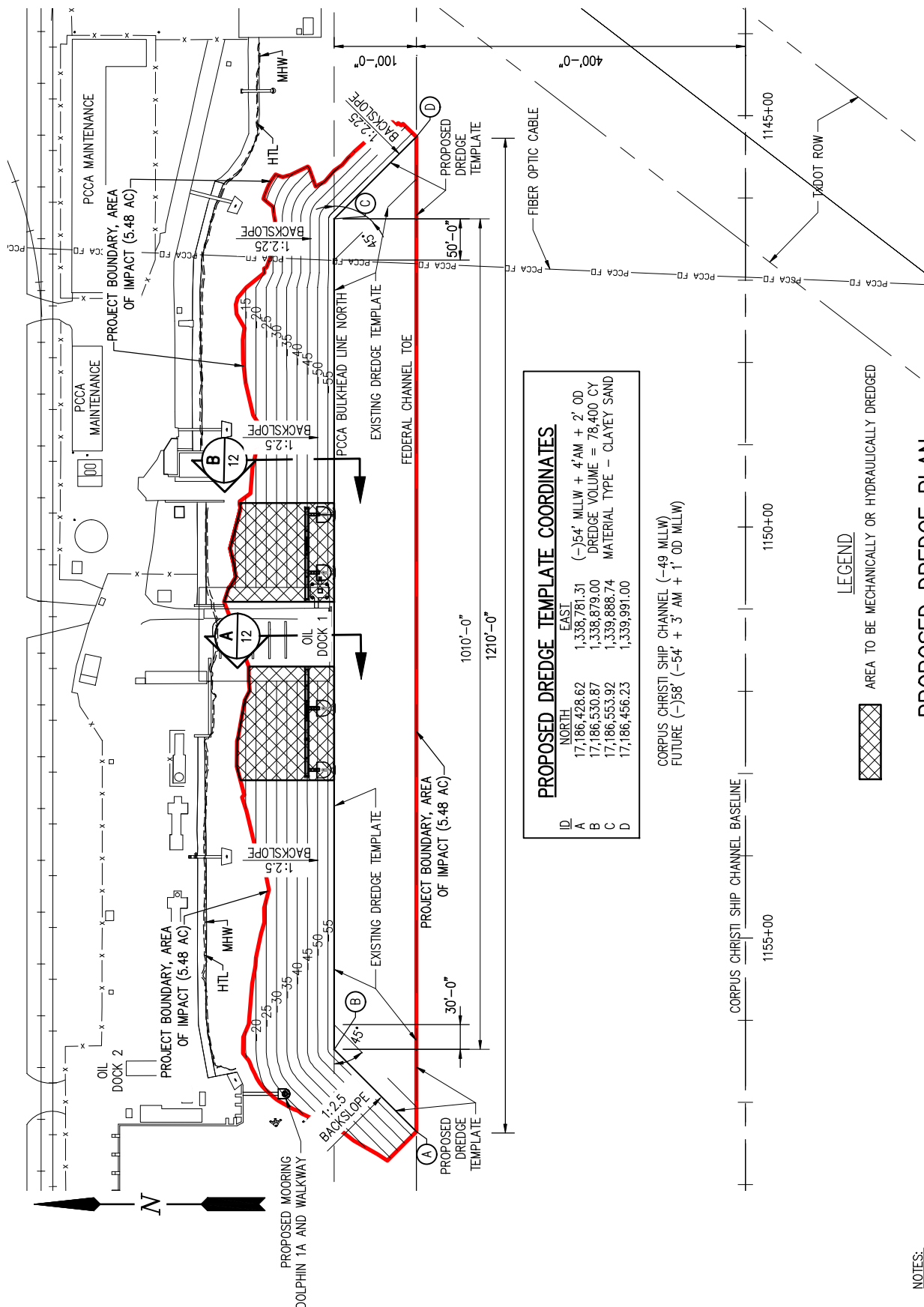
REV
1

LANIER & ASSOCIATES
CONSULTING ENGINEERS
INCORPORATED
LA: EF-1120 TX: F-2981
NEW ORLEANS • BEAUMONT • CORPUS CHRISTI • HOUSTON

PORT OF CORPUS CHRISTI AUTHORITY
CORPUS CHRISTI NUECES COUNTY, TEXAS

OIL DOCK 1
SHIP DOCK IMPROVEMENTS
WALKWAY BENTS - PLAN & ELEVATION

DATE 9/10/2021
DESIGN CLO
DRAWN WPA
CHECK CLO
JOB NO 11572
SHEET No.
10 OF 14



PROPOSED DREDGE TEMPLATE COORDINATES

ID	NORTH	EAST
A	17,186,428.62	1,338,781.31
B	17,186,530.87	1,338,879.00
C	17,186,553.92	1,339,888.74
D	17,186,456.23	1,339,991.00

CORPUS CHRISTI SHIP CHANNEL (-49 MLLW)
FUTURE (-58' (-54' + 3' AM + 1' OD MLLW))

LEGEND

AREA TO BE MECHANICALLY OR HYDRAULICALLY DREDGED

PROPOSED DREDGE PLAN

SCALE: 1" = 175'



NOTES:

1. CHANNEL MAP PROVIDED BY USAGE AND BASE MAP PROVIDED BY PORT OF CORPUS CHRISTI AUTHORITY (PCCA).
2. CONTOURS SHOWN ARE REFERENCED TO MLLW.

CHRIS O'BRIEN, P.E.
TX PE 108174

PRELIMINARY - FOR PERMIT PURPOSES ONLY

REV
0

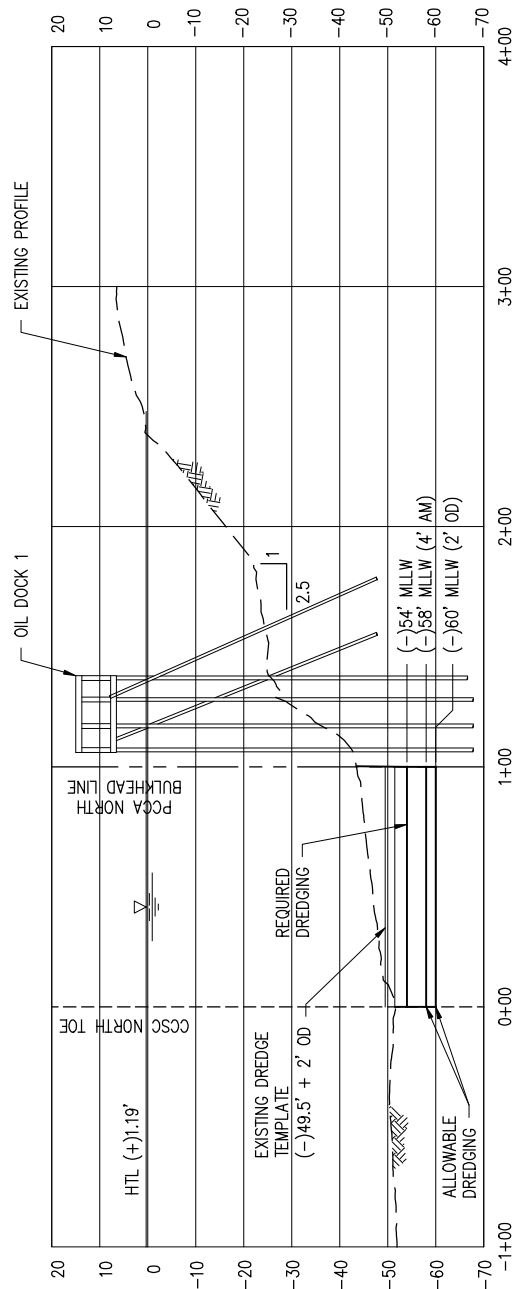
LANIER & ASSOCIATES
CONSULTING ENGINEERS
INCORPORATED

LA: EF-1120 TX: F-2981
NEW ORLEANS • BEAUMONT • CORPUS CHRISTI • HOUSTON

PORT OF CORPUS CHRISTI AUTHORITY
CORPUS CHRISTI NUECES COUNTY, TEXAS

OIL DOCK 1
SHIP DOCK IMPROVEMENTS
PROPOSED DREDGE PLAN

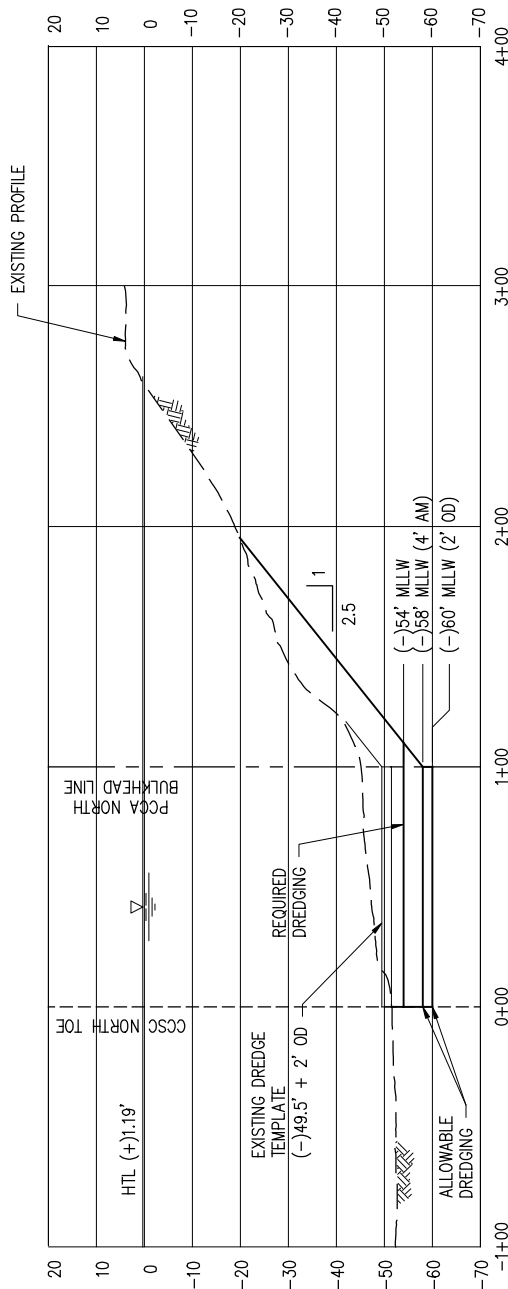
DATE 9/10/2021
DESIGN CLO
DRAWN WPA
CHECK CLO
JOB NO 11572
SHEET No.
11 OF 14



EAST 1151+00 - LOADING DOCK

SCALE: 1"=80'H, 1"=40'V

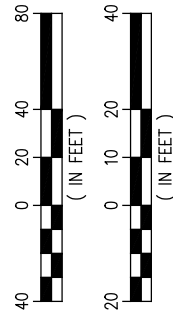
A
11



EAST 1149+00 - TYPICAL SECTION

SCALE: 1"=80'H, 1"=40'V

B
11



CHRIS O'BRIEN, P.E.
TX PE 108174

PRELIMINARY - FOR PERMIT PURPOSES ONLY

REV
1

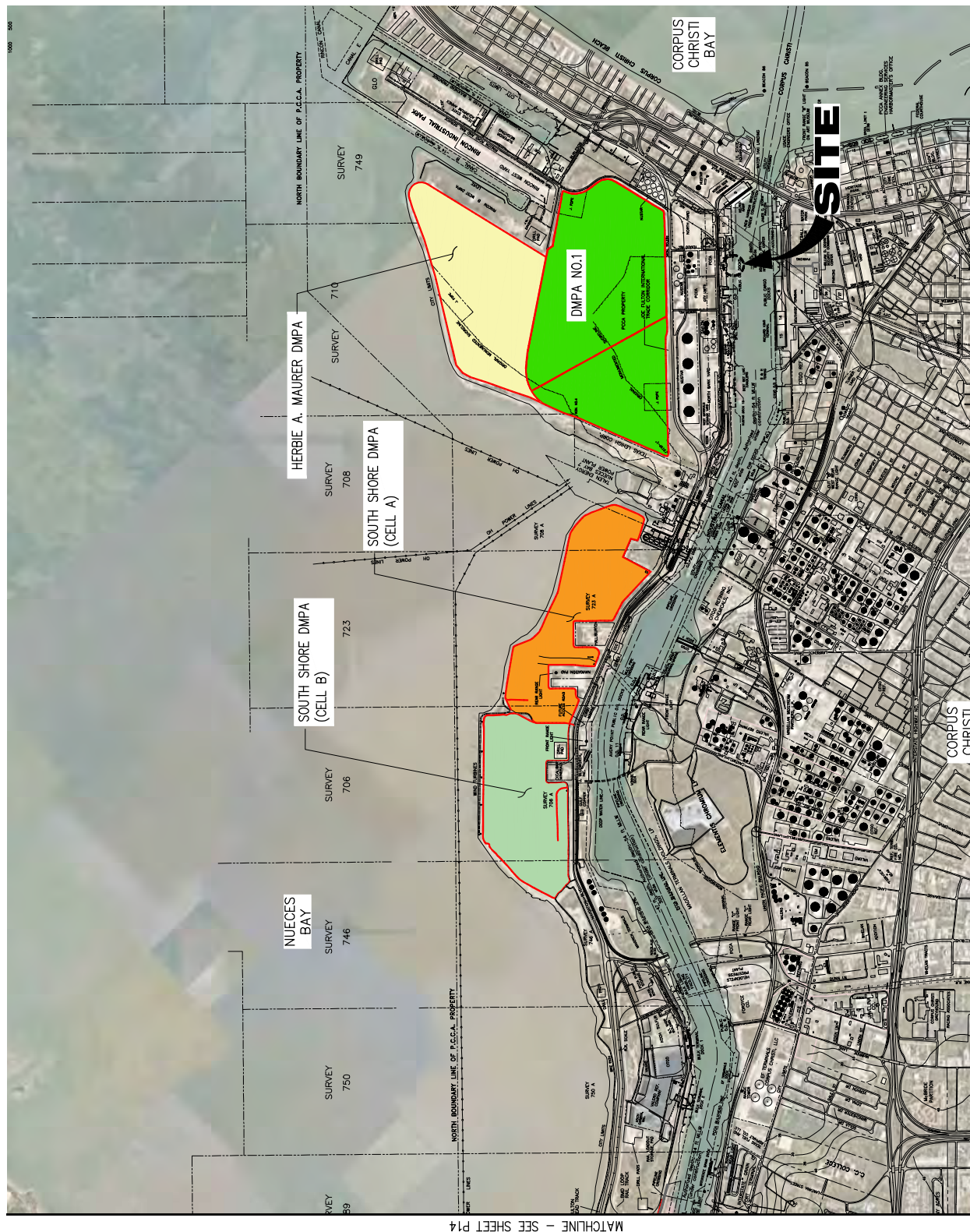
LANIER & ASSOCIATES
CONSULTING ENGINEERS
INCORPORATED

LA: EF-1120 TX: F-2981
NEW ORLEANS • BEAUMONT • CORPUS CHRISTI • HOUSTON

PORT OF CORPUS CHRISTI AUTHORITY
CORPUS CHRISTI NUECES COUNTY, TEXAS

OIL DOCK 1
SHIP DOCK IMPROVEMENTS
DREDGE SECTIONS

DATE 9/10/2021
DESIGN CLO
DRAWN WPA
CHECK CLO
JOB NO 11572
SHEET No.
12 OF 14



LEGEND

- SOUTH SHORE DMPA (CELL A)
- SOUTH SHORE DMPA (CELL B)
- HERBIE A. MAURER DMPA
- DMPA NO. 1

DMPA LOCATION MAP

SCALE: NTS

CHRIS O'BRIEN, P.E.
TX PE 108174

PRELIMINARY - FOR PERMIT PURPOSES ONLY

REV
1

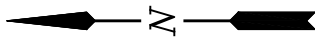
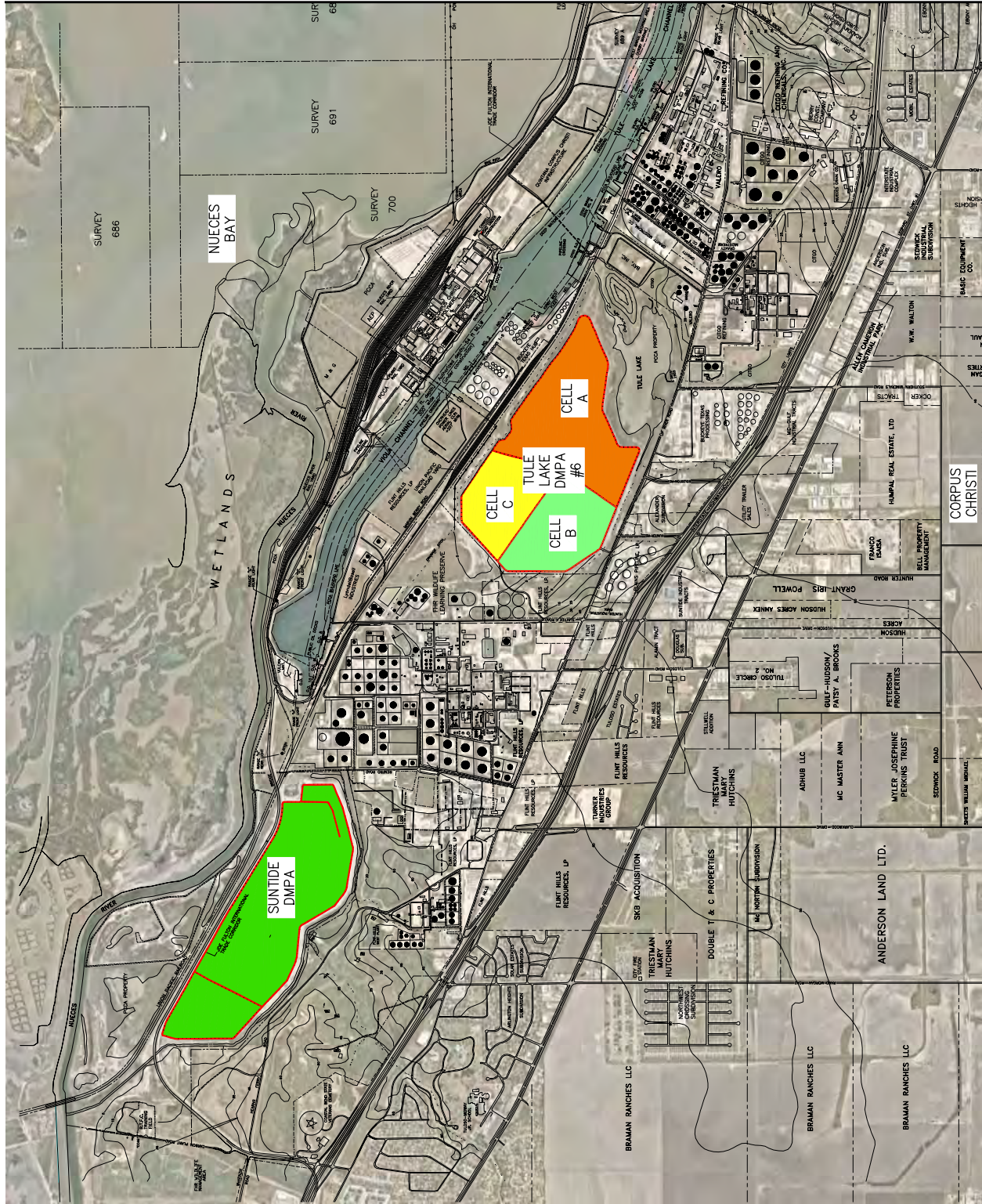
LANIER & ASSOCIATES
CONSULTING ENGINEERS
INCORPORATED

LA: EF-1120 TX: F-2981
NEW ORLEANS • BEAUMONT • CORPUS CHRISTI • HOUSTON

PORT OF CORPUS CHRISTI AUTHORITY
CORPUS CHRISTI NUECES COUNTY, TEXAS

OIL DOCK 1
SHIP DOCK IMPROVEMENTS
PERMITTED DMPA LOCATIONS 1/2

DATE 9/10/2021
DESIGN CLO
DRAWN WPA
CHECK CLO
JOB NO 11572
SHEET No.
13 OF 14

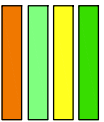


DMPA LOCATION MAP

SCALE: NTS

LEGEND

- TULE LAKE CELL A
- TULE LAKE CELL B
- TULE LAKE CELL C
- SUNTIDE DMPA



CHRIS O'BRIEN, P.E.
TX PE 108174

PRELIMINARY - FOR PERMIT PURPOSES ONLY

LANIER & ASSOCIATES
CONSULTING ENGINEERS
INCORPORATED

LA: EF-1120 TX: F-2981
NEW ORLEANS • BEAUMONT • CORPUS CHRISTI • HOUSTON

PORT OF CORPUS CHRISTI AUTHORITY
CORPUS CHRISTI NUECES COUNTY, TEXAS

OIL DOCK 1
SHIP DOCK IMPROVEMENTS
PERMITTED DMPA LOCATIONS 2 OF 2

DATE 9/10/2021
DESIGN CLO
DRAWN WPA
CHECK CLO
JOB NO 11572
SHEET No.
14 OF 14

REV
1